



Rowan College

SOUTH JERSEY

2021-2022 Report to the Community

2022-2023 Strategic Planning
Goals & Objectives



2021-2022

Achievement Summary

Partnership Collaboration

- Inspira Health
- Rowan University (RU) – Rowan Choice Collaborative
- Rowan University School of Osteopathic Medicine (RowanSOM) – Academic/Student Pathways
- South Jersey Scholarship Fund (Diocese of Camden HS Network)
- Special Olympics New Jersey

County Government

- Transfer of Gloucester County Veterinary Clinic to RCSJ – Establish a dual track of Veterinary Science (Gloucester)
- Enter final phase to open Health Science Center – \$7.5m (Gloucester)
- Prepare RowanSOM clinic building to begin construction - \$8m (Cumberland)
- Proposed Career and Technical Education (CTE) building – target budget \$22.5m (Cumberland)
- Ribbon cutting of the retro fitted front corridor of the Performing Arts Center to establish a Nursing Program expansion – \$900,000 (Cumberland)

College

- Complete restructure of Enrollment Management Plan
- Enter design phase of “Pathway to Medicine” medical program with RowanSOM and RCSJ Biological Science Program
- Redesign of the “Adult Learner Division” to include Military, Corrections and Employment Centers, along with regional business Human Resource departments
- Opening of new academic programs such as: Human Resource Management, Entrepreneurship, Drug and Alcohol Counseling, Biotechnology, Radio, Television and Film, and Electrical Engineering Technology
- Launched the Enterprise Resource Planning (ERP) implementation process

President's Message

This past year represents a challenging – yet hopeful – time in the history of Rowan College of South Jersey (RCSJ); a period during which the institution evolved to meet the shifting needs of its students, faculty and staff as the dark cloud of COVID-19 and its restrictions started to wane.

1 RCSJ began the fiscal year centerstage in the national conversation on college affordability. On July 16, 2021, U.S. Secretary of Education, Miguel Cardona, was welcomed to the Gloucester campus for a roundtable discussion with local leaders and dignitaries. Secretary Cardona toured RCSJ's Nursing & Health Professions division before he met with students to hear their first-person accounts outlining how RCSJ helped to put a college education within reach.

2 September marked the beginning of the Fall 2021 semester and the celebrated return of in-classroom learning. The reinstatement of on-campus classes, along with the continuation of hybrid, online and live online course delivery methods, guaranteed a range of academic delivery options to suit individualized student needs and preferences.

3 On October 5, 2021, RCSJ, Rowan University and the Rowan School of Osteopathic Medicine expanded their partnership with a groundbreaking for a Cumberland campus Rowan Medicine Center, while the Rowan Medicine Center on RCSJ's Gloucester campus conducted outreach on available patient care services.

4 Later that month, on October 18, the College held a ribbon-cutting for the Mechatronics Innovation Learning Lab, which provides laboratory and classroom space for both RCSJ and Rowan University Engineering Technology majors.

5 RCSJ continued to deepen its long-standing commitment to educating and supporting student-veterans, garnering local and national attention. On November 11, 2021, the College received the “We Value Our Veterans” award from Governor Murphy, and, in early 2022, RCSJ ranked #3 within its category on a national list of the top Military Friendly® Schools.

During the Spring 2022 semester the College focused on expanding opportunities through strategic partnerships.

6 On April 22, 2022, RCSJ forged a historic premier partnership in education, employment, and patient care with Inspira Health. This latest “EDs & MEDs” collaboration provides priority clinical experience to support RCSJ students and funding for the development of future educational pathways to real-life jobs.

RCSJ has continued to operate in accordance with its Strategic Plan for 2020-2023, which addresses public health, socioeconomic and educational modifications necessary to secure a strong and stable vision for the future.

By integrating learning disciplines, enhancing existing programs to align with shifting workforce needs and developing new programs and services to meet the academic and career goals of students, the College continues its long-standing, student-cultured philosophy.

Sincerely,

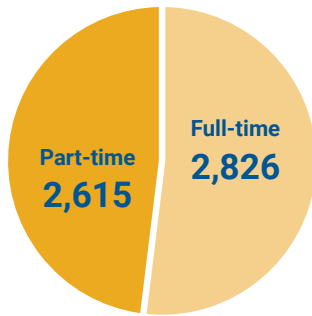
Frederick Keating, Ed.D.
President, Rowan College of South Jersey

*The numbers on the cover images correspond to the numbers in Dr. Keating's message and serve as a caption.*



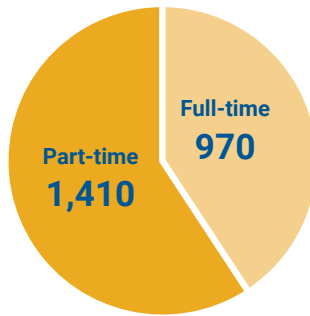
Fall 2022 Enrollment

Gloucester



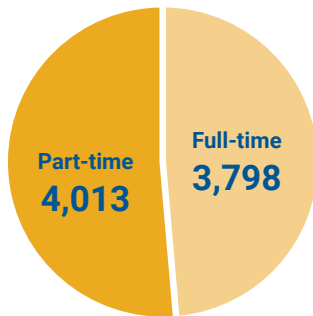
Headcount
5,441

Cumberland



Headcount
2,380

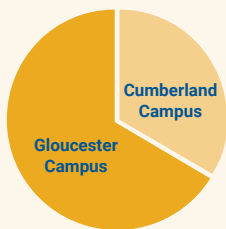
RCSJ



Headcount
7,811

Develop a three-year financial sustainability plan to stabilize the loss of revenue from enrollment declines.

RCSJ FY 2023 Financial Status



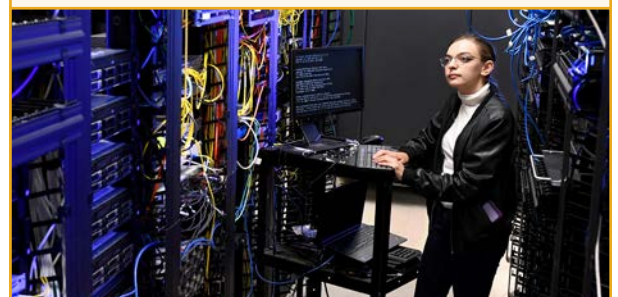
Gloucester Campus \$ 42,144,506
Cumberland Campus \$ 22,144,548

RCSJ TOTAL \$ 64,289,054

Develop a three-year enrollment management plan to expand traditional and non-traditional recruitment/retention patterns.

RCSJ Strategic Planning 2022 – 2023 Goals & Objectives

1. Expand Career & Technical Education programs
2. Develop Workforce Development Board collaborative partnerships
3. Boost Veterans Services – education and behavioral services
4. Re-establish Department of Corrections – reentry educational services
5. Design pathways to medical and health-care professions with county high schools
6. Partner with Child Abuse Research, Education and Support Services (CARES) – Division of RowanSOM
7. Build the Rowan University/RowanSOM grant partnership
8. Geographical expansion of the Inspira Health relationship
9. Finalize an ACENDA Integrated Health Partnership Memorandum of Understanding
10. Decentralization of main campus with Community Outreach programs
 - Public School System
 - Local Education Center
 - Community Awareness
 - Grant Opportunity
 - Community Organization Partnerships
11. Development of Workforce Innovation & Industry Partnerships
 - Chambers of Commerce
 - South Jersey Chamber of Commerce
 - Southern NJ Development Council
 - New Jersey Business & Industry Association (NJBIA)
12. Academic Expansion - Emerging Industries such as:
 - Behavioral Science (Social Work)
 - Respiratory Therapy
 - Mechanical Engineering Technology
 - Veterinary Technology
 - Wind Power and Turbine Technology
 - Healthcare Social Services



**Cumberland County
Board of County Commissioners**

Douglas Albrecht, *Director*
Antonio Romero, *Deputy Director*
John Capizola, Jr.
Victoria Groetsch-Lods, *Education Liaison*
Carol Musso
Donna Pearson
Joseph V. Sileo

**Gloucester County
Board of County Commissioners**

Frank J. DiMarco, *Director*
Heather Simmons, *Deputy Director*
Lyman Barnes, *Education Liaison*
Nicholas DeSilvio
Denice DiCarlo
Jim Jefferson
Christopher Konawel, Jr.

**Rowan College of South Jersey
Board of Trustees**

Gene J. Concordia, *Chair*
Ruby Love, *Vice Chair*
Kenneth Mecouch, *Treasurer*
Len Daws, *Secretary*
Lita M. Abele
Ave Altersitz
Jennica L. Bileci
Robert L. Bumpus
Reverend Dr. James A. Dunkins
Yolanda Garcia Balicki, Esq.
Dr. Warren S. Wallace
Douglas J. Wills, Esq.
Frederick Keating, Ed.D., *ex officio*

**Rowan College of South Jersey
Administration**

Frederick Keating, Ed.D.
President
Brenden B. Rickards, Ph.D.
Provost & Vice President, Academic Services
Dominick J. Burzichelli
*Executive Vice President
& Chief Operating Officer*
Judith Atkinson
Vice President, Student Services
Josh R. Piddington
Vice President & Chief Information Officer
James Piccone, Ed.D.
Vice President & Chief Administrative Officer, Cumberland Campus

Cumberland Campus
3322 College Drive, Vineland, NJ 08360

Gloucester Campus
1400 Tanyard Road, Sewell, NJ 08080

RCSJ costs approximately 67% less than the average public 4-year college.

More than
\$1,000,000
in scholarships available

\$866,463
Community College Opportunity Grant funds awarded fall 2022

\$3,671
Average grant and scholarship aid package

Grants

Secured and In Progress

- Equipment Leasing Fund (ELF) (\$250,000)
IT upgrades – Cumberland Campus
- Rowan University Grant
 - ▷ \$2,500,000 Health Professions Center (*Gloucester Campus*)
 - ▷ \$2,000,000 Rowan Medicine Clinic (*Cumberland Campus*)
- Securing Our Children’s Future - Advanced Manufacturing Center
Gloucester Campus - Shared Facility use with GCIT
- Securing Our Children’s Future (\$5,000,000)
Nursing addition - Gloucester Campus

In Application

- National Science Foundation Racial Equity in STEM – (target \$5,000,000)
Dual Campus
- Higher Education Facilities Trust (HEFT) – (target \$5,000,000)
Nursing addition - Cumberland Campus



- Behavioral Science and Law & Social Justice
- Business Studies
- Career and Technical Education
- Communication and Creative & Performing Arts
- Education and Humanities
- Nursing and Health Professions
- Science, Technology, Engineering and Mathematics (STEM)



President's State Appointments

- New Jersey Dual Enrollment Study Commission (HSOP)
Governor appointment
- New Jersey Workforce in Infrastructure Network Commission
Secretary of Labor appointment
- New Jersey Council of County Colleges (NJCCC) Legislative Committee
Chair appointment
- New Jersey Joint Workforce Development Committee- New Jersey Business & Industry Association (NJBIA)/Center for Economic Research
NJBIA appointment